



fun care safe respect learn



## HEAD TEACHER'S

### HIGHLIGHTS

Dear Parents,

Hope you have all had a good week. We have been busy with preparations for starting back and have had our risk assessment agreed by Telford and Wrekin so looks like our staggered start can go ahead. If your child is returning to school next week you will have received notification of their start date and time.

Please remember social distancing when you arrive at school. It is recommended that only one parent brings their child to lessen the amount of people at the school gate.

**Bubble 1 to arrive at school 9:15 am**

**Bubble 1 to leave at 3:15 pm**

**Bubble 2 to arrive at school 8:45 am**

**Bubble 2 to leave at 2:45 pm**

Please could you remind your child to walk into school sensibly and although they might feel excited about returning, they need to remember to socially distance when they see their friends and teacher. We are aiming for children to enter school calmly and happily. Please remember the staff know your child well and will be on hand to address any worries they may have.

### Reminder of Things Your Child Will/Will not need

Please ensure your child brings a named water bottle, these will be kept in individual spaces.

Please could your child bring a clearly named pencil case with colouring pencils, this will be kept in their drawer and will not be taken back and forth from school. We think it will help your child to recognise their own equipment and limit sharing of things that are handled frequently. School will give each child a named pencil, glue stick, scissors, whiteboard pen etc.

Your child will **not** need their school bag.

If the weather is still as sunny as it has been then your child will not need their coats, however if weather is changeable please send in coats as the teachers are aiming to take the children outside whenever possible.

Any homemade non-disposable face coverings that children, are wearing when they arrive at school must be removed by the wearer and placed into a plastic bag that the wearer has brought with them in order to take it home. The wearer must then wash their hands.

## **Staffing**

**Bubble 1** – Monday and Tuesday: Mrs Richardson and Mrs Harris. Wednesday: Mrs Bryon and Mrs Harris. Thursday and Friday: Mrs Bryon and Mrs Bundy. Lunchtime Supervisor: Mrs Chebsey.

**Bubble 2** – Monday and Tuesday: Mrs Powell and Mrs Sanders. Wednesday, Thursday and Friday: Mrs Powell and Mrs Wellman. Lunchtime Supervisor: Mrs Judd.

Please remember that if staffing cannot be maintained provision may need to be restricted or stopped at relatively short notice as guidance does not allow for staff to move from one Bubble to another at current time.

## **Attendance**

Most importantly : in order to protect staff and other children and families and to avoid transmission of Coronavirus do not send your child into school if they or anyone in your household becomes unwell with a new, continuous cough or a high temperature or loss of/ change in smell or taste your child must not come to school – government advice on dealing with a possible infection in a household is available here: [COVID-19: guidance for households with possible coronavirus infection guidance](#) and here: [self-isolation-advice](#)

Also, as I am sure you are aware if your child is on the shielding (extremely clinically vulnerable) or clinically vulnerable list or someone in their household is on one of these lists, current government advice is that these children don't return to school yet.

## **You may be wondering:**

### **What happens if someone becomes unwell at an educational or childcare setting?**

If anyone in an education becomes unwell with a new, continuous cough or a high temperature, or has a loss of, or change in, their normal sense of taste or smell (anosmia), they must be sent home and advised to follow the [COVID-19: guidance for households with possible coronavirus infection guidance](#).

If a child is awaiting collection, they will be moved, if possible, to a room where they can be isolated behind a closed door. (We will use my office for this) with appropriate adult supervision. Ideally, a window should be opened for ventilation. If it is not possible to isolate them, move them to an area which is at least 2 metres away from other people.

If they need to go to the bathroom while waiting to be collected, they should use a separate bathroom if possible. The bathroom should be cleaned and disinfected using standard cleaning products before being used by anyone else.

PPE should be worn by staff caring for the child while they await collection if a distance of 2 metres cannot be maintained (such as for a very young child or a child with complex needs).

In an emergency, call 999 if they are seriously ill or injured or their life is at risk. Do not visit the GP, pharmacy, urgent care centre or a hospital.

If a member of staff has helped someone with symptoms, they do not need to go home unless they develop symptoms themselves (and in which case, a test is available) or the child subsequently tests positive (see 'What happens if there is a confirmed case of coronavirus in a setting?' below). They should wash their hands thoroughly for 20 seconds after any contact with someone who is unwell. Cleaning the affected area with normal household disinfectant after someone with symptoms has left will reduce the risk of passing the infection on to other people. See the [COVID-19: cleaning of non-healthcare settings guidance](#).

## **What happens if there is a confirmed case of coronavirus in a setting?**

When a child or staff member develops symptoms compatible with coronavirus, they should be sent home and advised to self-isolate for 7 days. Their fellow household members should self-isolate for 14 days. All staff and students who are attending an education setting will have access to a test if they display symptoms of coronavirus, and are encouraged to get tested in this scenario.

Where the child or staff member tests negative, they can return to their setting and the fellow household members can end their self-isolation.

Where the child or staff member tests positive, the rest of their class or group within their education setting should be sent home and advised to self-isolate for 14 days. The other household members of that wider class or group do not need to self-isolate unless the child, young person or staff member they live with in that group subsequently develops symptoms.

As part of the national test and trace programme, if other cases are detected within the cohort or in the wider setting, Public Health England's local health protection teams will conduct a rapid investigation and will advise schools and other settings on the most appropriate action to take. In some cases a larger number of other children, young people may be asked to self-isolate at home as a precautionary measure – perhaps the whole class, site or year group. Where settings are observing guidance on infection prevention and control, which will reduce risk of transmission, closure of the whole setting will not generally be necessary

## **Risk Assessment**

It is important that you are aware of the risks and how these are managed, our current risk assessment will be added to the school website prior to the school opening. The risk assessment will be reviewed and updated on a daily basis either in regards to changes in guidance or through monitoring of routines and procedures.

## **Final Note**

I realise that is rather a lot of information, some of it is there in case we need it but hopefully it won't come to that.

I am very much hoping that everyone remains alert , follows guidance given and stays healthy over the next few weeks.

Now let's look forward to a positive start for those children starting back and for those that are not, please keep in touch, keep up with your home learning and sending your photographs in for the newsletter. Everyone is very much a special part of Church Aston –wherever they may be.

If you require any further information or would like to discuss anything then please email me on [H2033@taw.org.uk](mailto:H2033@taw.org.uk)

Take care and best wishes

Jenny Griffiths

## **IMPORTANT GOVERNMENT INFORMATION FOR PARENTS**

Government guidance and information for parents on the opening of schools during the Coronavirus outbreak.

<https://www.gov.uk/government/publications/closure-of-educational-settings-information-for-parents-and-carers>





## CLASS 1

Hi Class 1,

Hope you have enjoyed half term? Have a lovely weekend, look forward to seeing some of you in class next week.

If you will be at home then we look forward to seeing what you have been doing with your home learning next week.

Remember to stay safe.



## CLASS 2

We hope you have making the most of the superb weather we have had during half term?

We look forward to seeing the work you have been doing on our **Towers** theme, especially the maths challenge we set in how many different ways you can make 20p using different coins. I wonder if anyone found out when building a tower up to 100p (£1) which was the tallest? A tower of pennies or a tower of 10p's.

Have a lovely weekend, we look forward to seeing some of you in class next week.

If you will be at home then we look forward to seeing what you have been doing with your home learning and keep up all the hard work, you have all been doing great!

Stay safe everyone.



# SCHOOL CALENDAR DATES

Just to keep  
you posted!

P.E with Joe ....Every Monday—Friday 9am for 30 mins  
join in with his daily workout at;

# Mathletics Superstars



Well done to the children that have achieved either a SILVER or BRONZE certificate, well done everyone!

Remember for every **1000 points** earned in a week you achieve a **bronze certificate**.

For **Silver** is it achieved **after 5 bronze** certificates and **Gold** award is after you have achieved **4 silver certificates** (20 weeks of sustained effort).



## BRONZE AWARD



## SILVER AWARD



# HOME LEARNING LINKS

Many online platforms have offered schools and parents free resources to support your child with their education whilst they are at home. Please take a look at the links below.

## Useful websites

[www.thepehub.co.uk](http://www.thepehub.co.uk)

<https://www.tts-group.co.uk/home+learning+activities.html>

<https://classroomsecrets.co.uk/free-home-learning->

<https://whiterosemaths.com/homelearning/>

<https://whiterosemaths.com/homelearning/year-1/>

<https://whiterosemaths.com/homelearning/year-2/>

[www.bbc.co.uk/teach/supermovers](http://www.bbc.co.uk/teach/supermovers)

<https://scratch.mit.edu/explore/projects/games>

[www.spellingshed.com/en-gb](http://www.spellingshed.com/en-gb)

[https://teach your monster to read](https://teach-your-monster-to-read)

[www.phonicsplay.co.uk](http://www.phonicsplay.co.uk) Username is **march20** Password is **home** [Mathletics](#) (see diaries for PW)

<https://naturedetectives.woodlandtrust.org.uk/naturedetectives/>

<https://www.discoveryeducation.co.uk> (see diaries for PW)

[www.twinkl.co.uk](http://www.twinkl.co.uk)

[www.snappymaths.com](http://www.snappymaths.com)

[www.ictgames.com](http://www.ictgames.com)

[www.topmarks.co.uk](http://www.topmarks.co.uk)

[www.mathshed.com](http://www.mathshed.com)

[www.bbc.co.uk/bitesize](http://www.bbc.co.uk/bitesize)

[www.natgeokids.com/uk/](http://www.natgeokids.com/uk/)

[www.primaryresources.co.uk](http://www.primaryresources.co.uk)

[Numberblocks](#) or [Alphablocks](#)

## LINKS FROM PARENT FEEDBACK RECEIVED

dkfindout.com [click here](#) for link

LetsGoLive [click here](#) for link

national oak academy ( weekly spelling tests) [click here](#) for link

Steve Backshall Q&A on a Wednesday morning at 9.30 on Facebook

Nick Cope on a Thursday afternoon on Facebook (he writes and sings children songs).

oxford owl site for the free ebooks [click here](#) for link

Purplemash [click here](#) for link

### **New daily lessons!**

Every day the BBC add three new lessons for each year group.

<https://www.bbc.co.uk/bitesize>

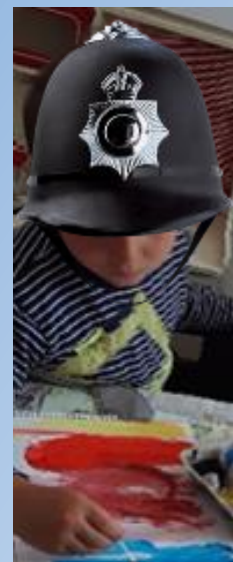
### **IMPORTANT GOVERNMENT INFORMATION**

Information for parents and carers about the closure of schools following the outbreak of coronavirus (COVID-19). This link was last updated **May 11th**. Please check for updates which this week include resources for online learning and links to the curriculum.

[Click here to be directed to the gov.uk website.](#)

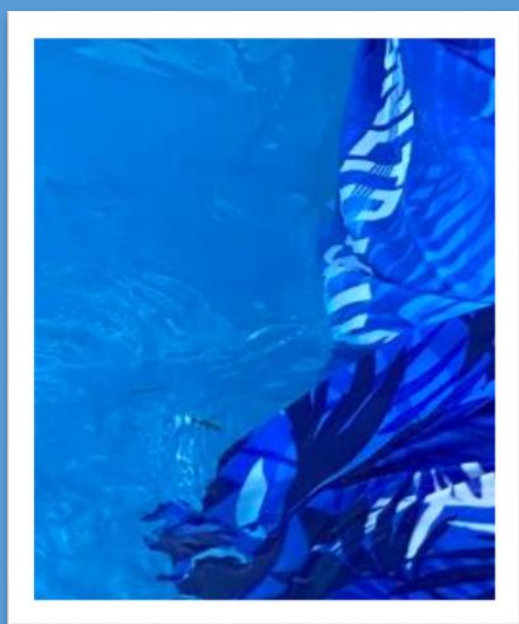
# GUESS WHO?

Look who was hiding under the helmet last week.



Who is hiding under the helmet this week? We shall reveal next week.

## Close up pic game



We have chosen one picture from the newsletter and zoomed into a part of it. Can you guess which picture it is? We shall reveal next week.



Did you guess last week's close up in picture?



## Free School Meals

If your circumstances have changed recently and you think you might be eligible for free school meals you can find further information about, and apply for, free school meals at;

[https://www.telford.gov.uk/info/20028/school\\_meals/9/](https://www.telford.gov.uk/info/20028/school_meals/9/)



Thank you to the parents that have e-mailed us with the sites and apps that they have been

The feedback so far on the **TOP FIVE** used sites and apps are;

<u>Whiterose Maths</u>	<a href="#">click to login</a>
<u>Twinkl</u>	<a href="#">click to login</a>
<u>BBC bitesize</u>	<a href="#">click to login</a>
<u>Espresso</u>	<a href="#">click to login</a> (passwords in your child's school diary)

National Oak Academy (weekly spellings) [click to login](#)

Parents have also been supporting children to access [Mathletics](#). (Passwords in their school reading dairy).

## FRIENDS OF SCHOOL ZOOM

### 31st May—Family Quiz



This events will be held with an entry fee of £2.50, further details are to follow.

## HAPPY BIRTHDAY

We hope you had a lovely day?

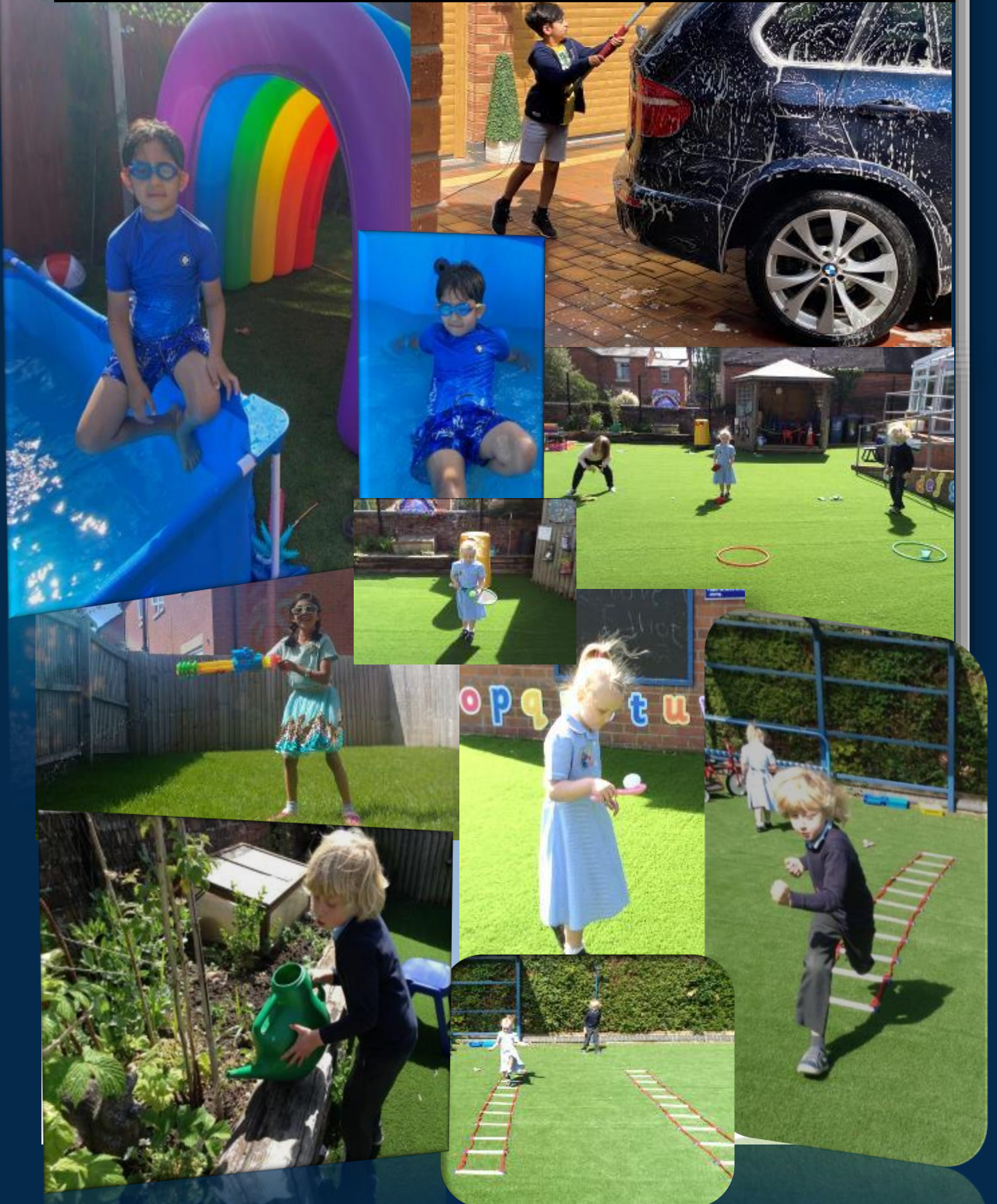






# The Great Outdoors

You've been busy watering plants, cleaning cars, playing sport and making time for fun in the swimming pool.



# Look what you've been busy creating

Continue to be creative and send in your wonderful photos.



Thank  
you!

Please continue to  
send in your photos to;  
[a2033@taw.org.uk](mailto:a2033@taw.org.uk)